



Guide to Using Print Profiles

- [Introduction](#)
- [Installing the colour profiles from the download](#)
- [How to check the Colour Profile of an image](#)
- [Viewing an onscreen preview \(soft-proof\) of your image file](#)
- [Embedding Print Profiles](#)

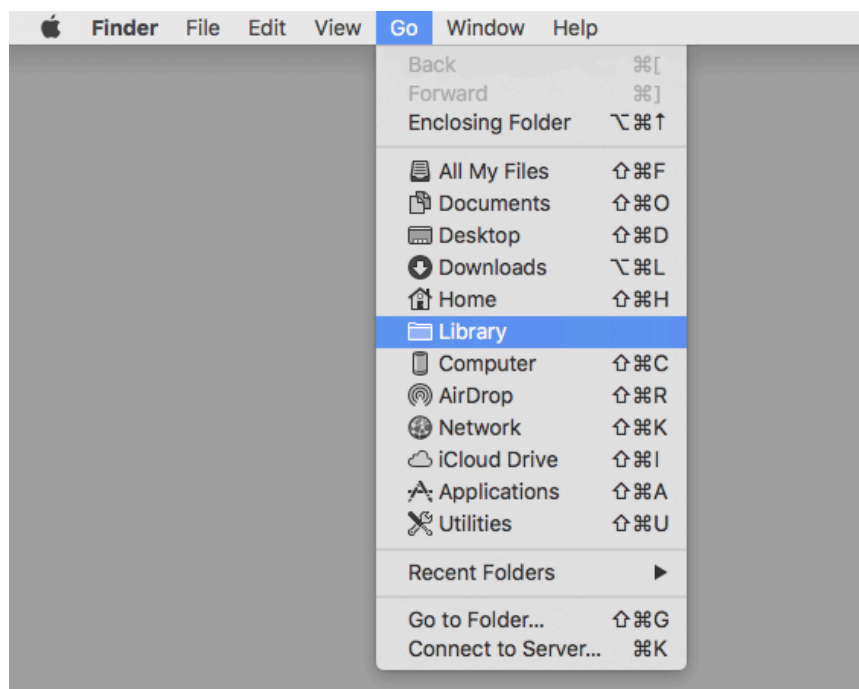
Introduction

This document describes how to use Print Profiles to achieve maximum colour accuracy. Remember that good Colour Management is essential for accurate printing. If you are working remotely, always follow the [Colour Management tips](#) before using Print Profiles.

Installing the colour profiles from the download

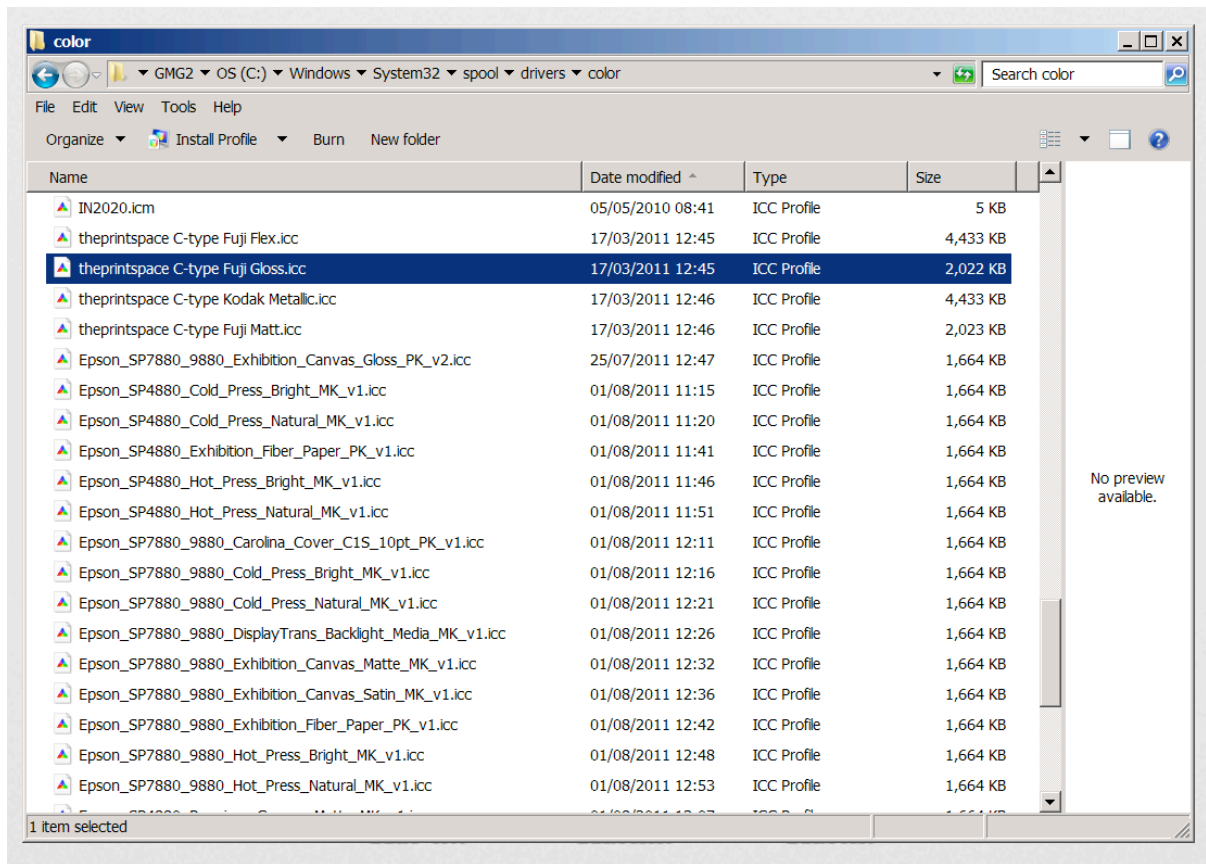
Firstly you need to place the downloaded print profiles in the correct folder on your Mac or PC to allow Photoshop to access them. On a Mac they need to be put in the Library.

To locate the Library Folder on your Mac simply select Go in the operating system Menu Bar, then hold down the alt (option key) and then select Library then ColorSync. Now copy the downloaded theprintspace profiles into the Profile folder.



Mac HD –Users/Library/ColorSync/Profiles

The equivalent PC version can be found here



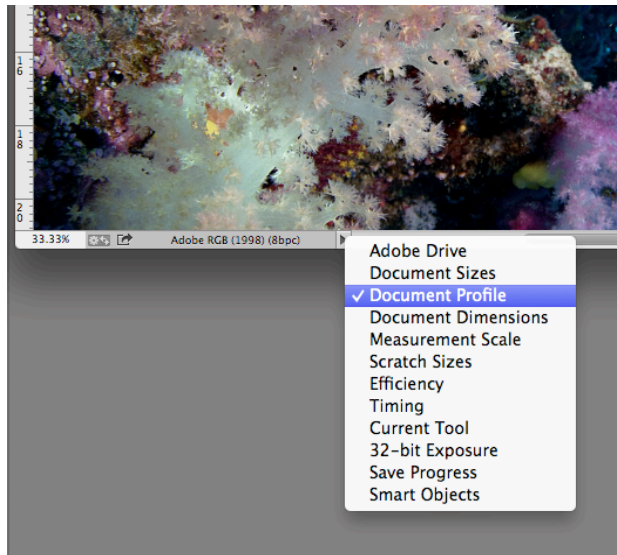
Windows - Windows\system32\spool\drivers\color

How to check the Colour Profile of an image

Open the file in Photoshop.

In the bottom left hand corner of the file window, (need picture) select the black arrow

Select show > Document profile.



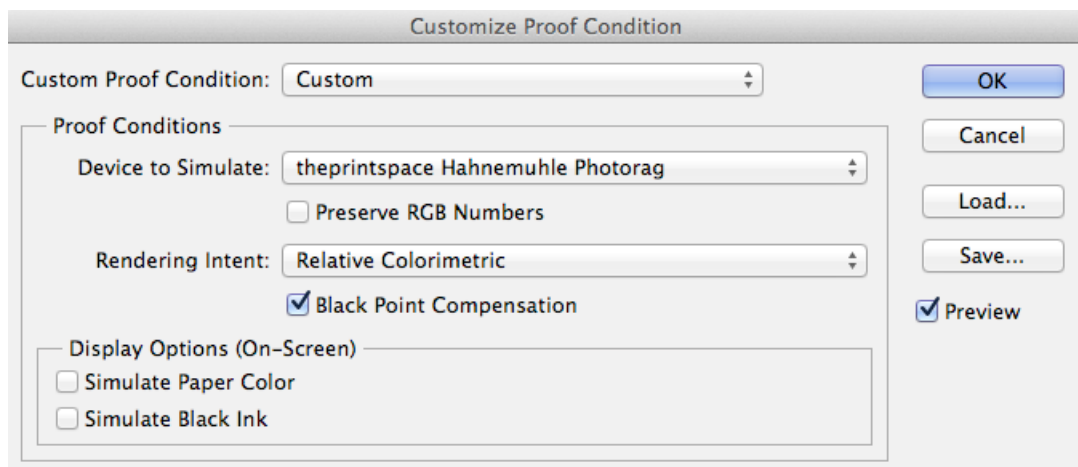
This shows you what colour profile, or colour space, your file is currently in. If your file is untagged you must assign a Working Colour Space before converting to the correct Print Profile. We suggest you assign Adobe 1998.

Viewing an onscreen preview (soft-proof) of your image file

A soft proof is an onscreen preview of the colours that are achievable with a specific combination of printer and paper. The print profile is specific to the print space – each one has been built & tested by us to ensure we are achieving the maximum range of colours available from each print device.

In order to view a soft proof, please follow the following 3-step procedure:

1. Place the downloaded profiles into the applicable operating system folder:
Mac OSX – Library\ColorSync\Profiles
Windows - Windows\system32\spool\drivers\color
2. Select **View > Proof set-up > Custom**. A pop up box will appear entitled 'Customise Proof Condition'. Make the following selections:



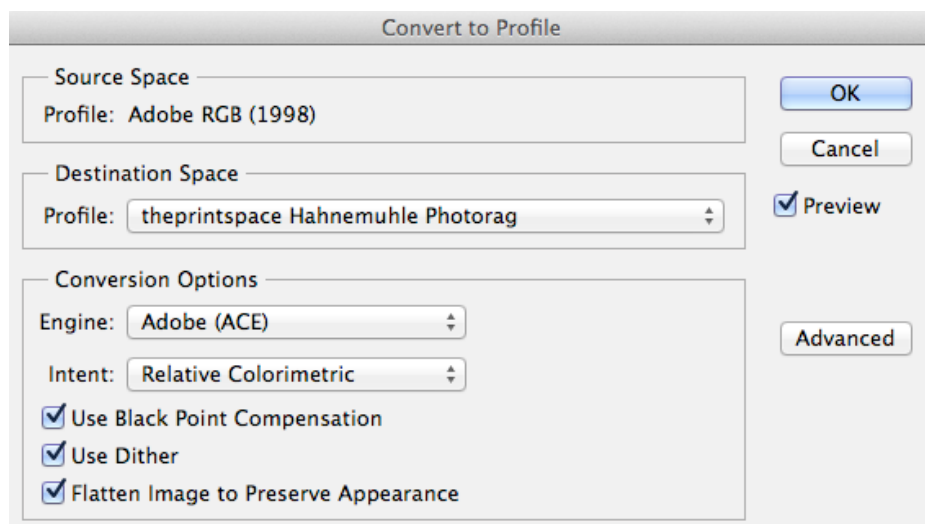
- i. For Custom proof Condition: select Custom
- ii. For Device to Simulate: select the profile for the paper type you want to preview, the profiles downloaded and saved in point ii will be shown as options here
- iii. Uncheck preserve CMYK numbers
- iv. For Rendering Intent: select Relative Colorimetric or perceptual and this is a subjective choice based on what looks best on screen.
- v. Check Black Point Compensation
- vi. Uncheck Simulate paper colour
- vii. Uncheck Simulate Black Ink
- viii. Select OK

This will then change the image appearance to create a soft proof – i.e. the on-screen representation of the finished print on the chosen paper. Remember each paper will affect your image file in different ways based on the paper characteristics.

3. Now its time to make adjustments to the image as you see fit on-screen. Contrast brightness and colour adjustment should be made based to the file to prepare it on-screen how you would like it to print.

Embedding Print Profiles

- 1) Go to **Edit > Convert to Profile**
- 2) A pop up box will appear entitled 'Convert to Profile'. Make the following selections:



- 3) Its important that you select the same setting as above in the soft proof in terms of the paper type and rendering intent
 - i. For Destination Space: select the theprintspace print profile for the correct paper type.
 - ii. For Conversion Options: for engine select Adobe ACE and for Intent select Relative Colorimetric or Perceptual
 - iii. Check Black Point Compensation, Use Dither

- iv. If the image is layered select Flatten Image, if it is already flat this option will be greyed-out

4) **Save as** the file to embed the profile.

IMPORTANT: do not overwrite the master file – save under a separate filename that describes the print profile embedded.

Now your file is correctly prepared for the paper of your choice.

For more information on Soft-Proofing and preparing your file for print please see our videos ***Preview your print*** and ***File Preparation Guide***

<https://vimeo.com/187806089>

<https://vimeo.com/170022296>

<https://vimeo.com/162863135>

